



Mātai Moana

A vision for the future of our whenua

April 2025

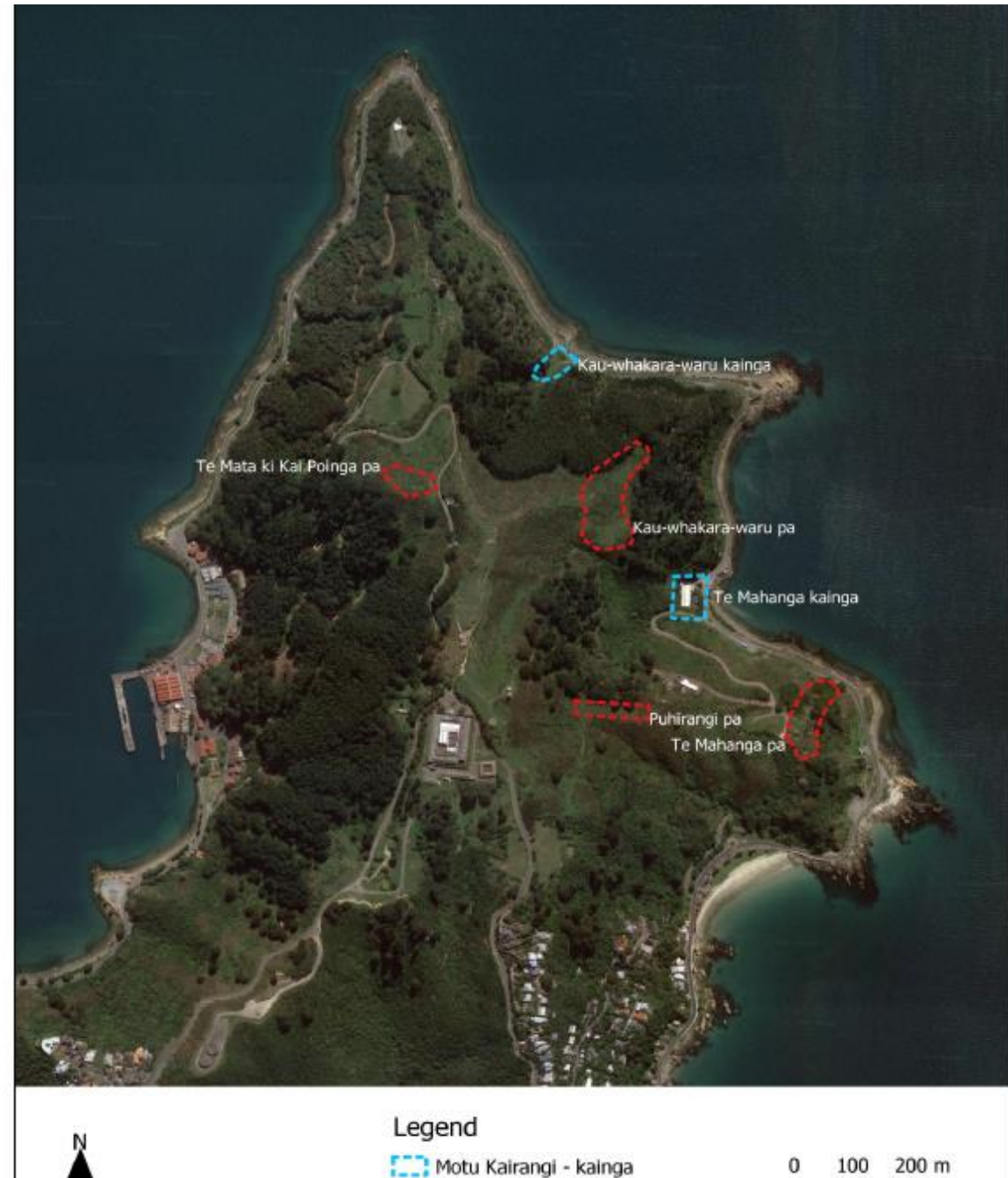
Taranaki Whānui ki Te Upoko o Te Ika

Our tūpuna whenua



Mātai Moana is a powerful reminder:

- This whenua, rich in cultural heritage, includes pā sites, wāhi tapu, and other significant historical structures that tell the enduring story of our people and our deep connection to this special place.
- Mātai Moana forms part of the Port Nicholson Block / Taranaki Whānui Treaty of Waitangi Deed of Settlement.
- This whenua is subject to a Right of First Refusal (RFR).



Activities for a fair RFR process for the 74 hectares:

- In 2019, the former Mayor of Wellington declared that the whenua would form part of a reserve.
- We advocated with the then Minister of Conservation to reframe discussions as a Crown-Trust partnership.
- We provided a detailed history of the site documented by Ihaia Puketapu.
- Coordinated a process for Land Information New Zealand to conduct an operational review of the land.



An aerial photograph of a large, forested island in the middle of a body of water. The island is covered in dense green trees and has a small road or path visible on its right side. The water is a deep blue with some whitecaps. In the background, there are more islands and mountains under a blue sky with some clouds.

Mātai Moana

To establish Mātai Moana as a reserve under the Reserves Act 1977 for the benefit of the nation

- We have worked with the Crown to develop the proposal for joint management.
- We are inviting the Council to become joint stewards of the land for the common benefit of the iwi/hapū and the people of Wellington.
- Affirms our presence and ahi kā.
- Mātai Moana holds deep meaning for uri, and the Trust is fully dedicated to driving this kaupapa forward.



A legacy for the next 1000 years - connect, revitalise, preserve and protect all that is special about Mātai Moana

- A new entity will be established to manage representation and decision-making.
- A primary focus of the governing entity will be the enduring protection and appropriate use of Matai Moana for generations to come.
- The entity's board will operate under a governance framework defining roles and objectives.
- This entity is independent and will have its own decision-making powers and functions.

Future planning and engagement

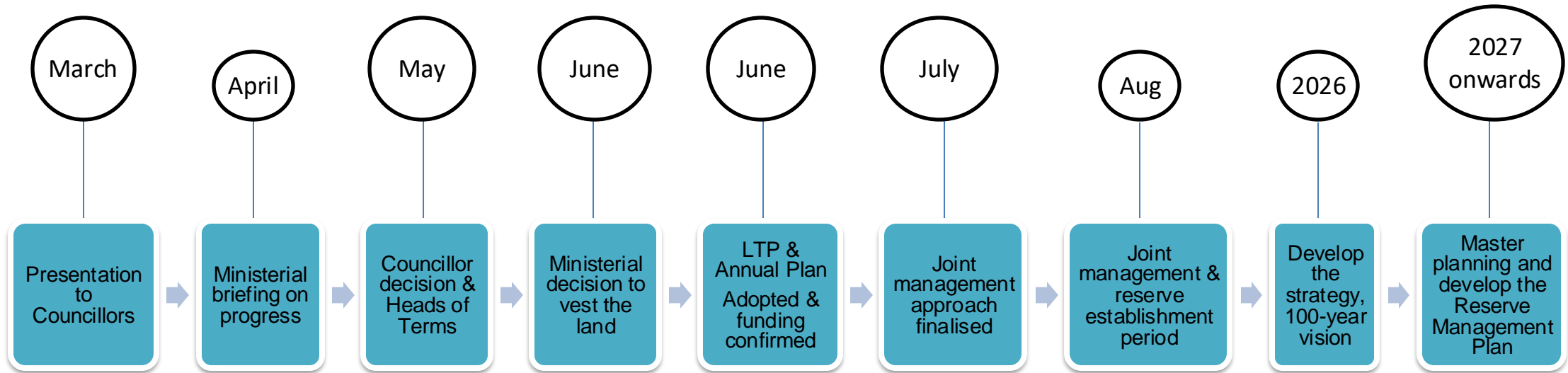
- Develop a 100-year vision for the reserve's values, principles, and priorities.
- Shape a long-term management approach for the proposed reserve.
- Within five years, create a Reserve Management Plan covering use, maintenance, and development. This will require public consultation.

Let's shape the future of this kaupapa

- Mātai Moana reminds us that when we work in harmony with the land, it will sustain us, as it has done for generations.
- Working together we can restore, protect, and uphold the mana and mouri of this sacred tūpuna whenua.
- Similar proposals exist such as the Tūpuna Maunga Authority, Zealandia and Otari-Wilton's Bush.



This is a vision grounded in tikanga, kaitiakitanga, and collective responsibility. To bring it to life, we need the support of many





Wellington City Council is seeking feedback as part of its Annual Plan on whether it should take on a joint management role for Mātai Moana.

You can help by making a submission [here](#) between now and midnight, 21 April 2025.

Taranaki Whānui ki Te Upoko o Te Ika